





ALTUNA AB32



Electric Pruning Shears AB32

PRODUCT **USING MANUAL**

CONTENT |

BEFORE USE INSTRUCTIONS 	21
PRODUCT DESCRIPTION 	22
CASE CONTENTS 	22
NAME AND SCHEMATIC OF EACH PART 	23
TECHNICAL SPECIFICATIONS 	24
OPERATING INSTRUCTIONS 	24
AFTER USE 	25
FAIL INDICATIONS 	26
USE, MAINTENANCE AND PRECAUTIONS OF BATTERY 	27
BLADE REFUELING 	30
TIGHTNESS ADJUSTMENT OF THE BLADE 	30
REPLACE THE BLADE 	31
SAFETY PRECAUTIONS 	32
AFTER-SALES SERVICES 	33
SPARE PARTS 	34

ALTUNA AB32



Dear customer, thank you choosing our ALTUNA AB32. In order to better use of AB32 pruner, it is imperative read this manual in its entirety and retain this manual for future reference. Should any irregularity happened during operations, please contact us immediately.



Please read all safety warnings and instructions carefully. Failure to follow these warnings and instructions may result in electric shock, fire or other serious injury.



Risk of injury, keep hands away from cutting head



Do neither use nor expose the electric pruning shears in the rain.



Recycle in accordance with local waste regulations. The device, accessories and packaging should be recyclable.



Keep away from heat sources.



Do not put in general waste.



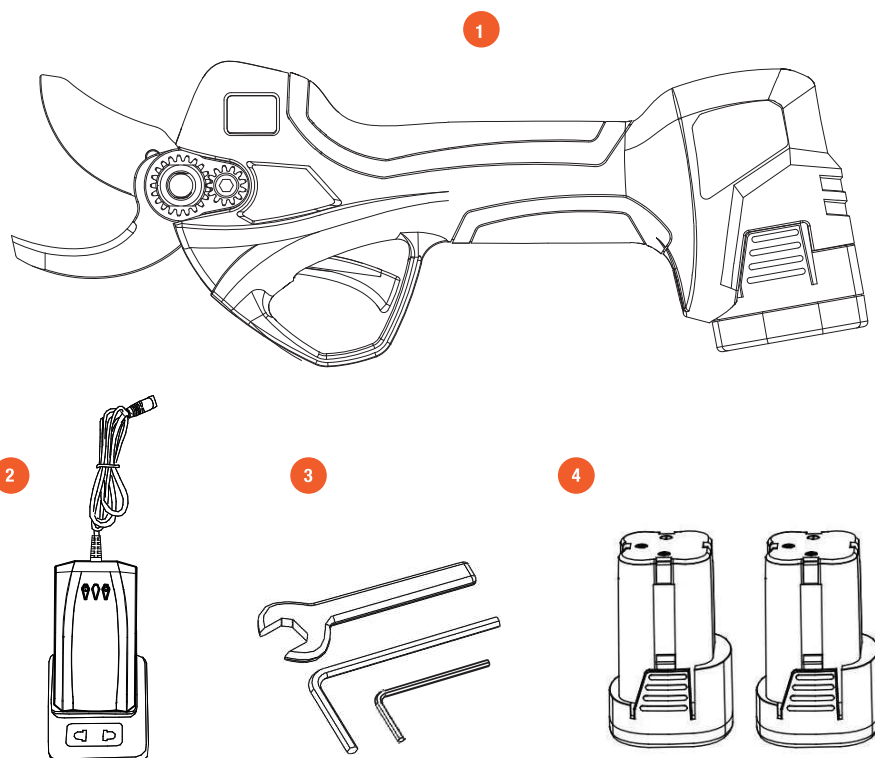
Please read all safety warnings and instructions carefully. Failure to follow these warnings and instructions may result in electric shock, fire, severe burns and other accidents.

PRODUCT DESCRIPTION |

This product is battery-driven electric pruning shears. It is mainly used for the pruning of fruit branches under 32mm and for the pruning and harvesting of orchards in large quantities. While operating the electric pruning shears, do not keep your hands near the pruning area to avoid injury.

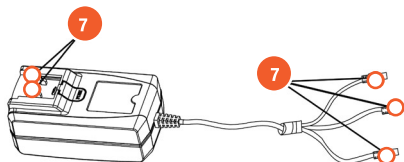
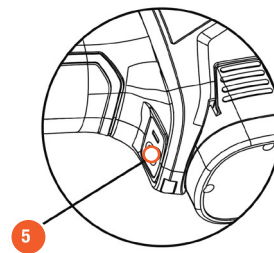
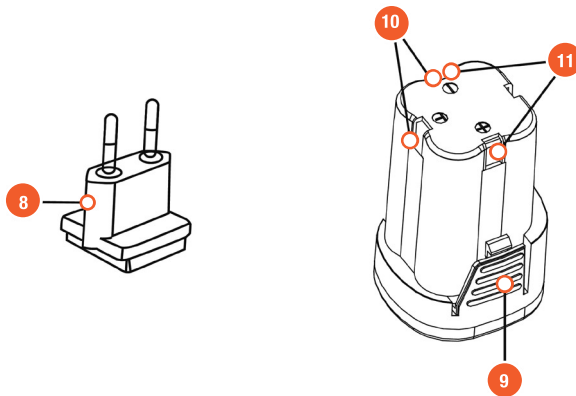
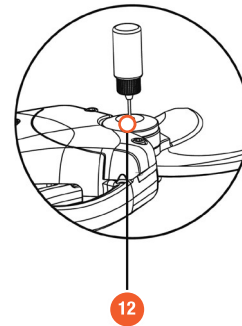
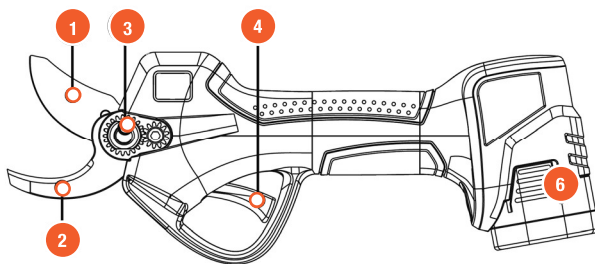
CASE CONTENTS |

1. Electric Scissors
2. Charger
3. Accessories
4. Battery Pack x2



NAME AND SCHEMATIC OF EACH PART I

- | | | |
|-----------------|-------------------------|------------------------------|
| 1. Moving Blade | 5. Power Control Switch | 9. Battery Removal Button |
| 2. Fixed Blade | 6. Battery Pack Inserts | 10. Battery Charging Jack |
| 3. Pin | 7. Charger Plug | 11. Battery Discharge Socket |
| 4. Trigger | 8. Charger AC Socket | 12. Oil hole |

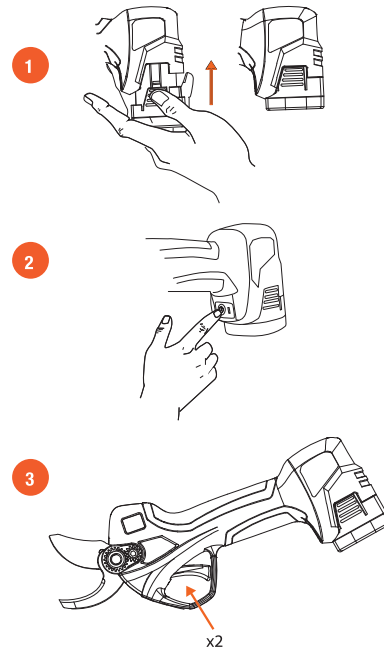


TECHNICAL SPECIFICATIONS |

Basic Information of the Electric Pruning Shears	
Operating Voltage	
Lithium Battery	16.8V 2.5Ah
Input Voltage of the Charger	AC110V~220V
Charging Time of the Battery	1.5~2H
Working Time of the Battery	4-5H
Maximum Power	500W
Total Weight	940G
Pruning Range (Maximum size)	
Diameter	32MM Soft Branches
Working Temperature	-10°~60°

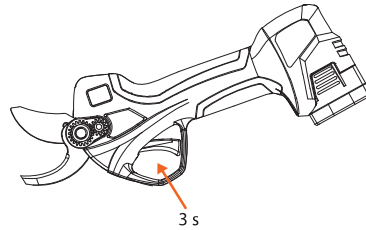
OPERATING INSTRUCTIONS |

- 1** Open the package and insert the battery pack into the battery pack inserts.
- 2** Turn on the power control switch and then the power indicator light will turn green.
- 3** The buzzer sounds 2 times when the power is first turned on then pull the trigger twice continuously to get into the activated state.
- 4** Normal pruning: press the trigger and then the blade will close. Release the trigger and then the blade will open. Blade closed: Keep pressing the trigger and when the buzzer rings for long, the blade is in the closed state.
- 5** Before start, press the trigger at intervals to close the blade without any load for several times and check if it is normal.
- 6** Start working after checked normal.

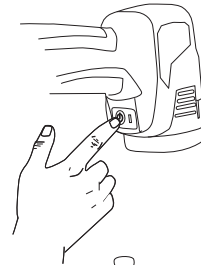


AFTER USE I

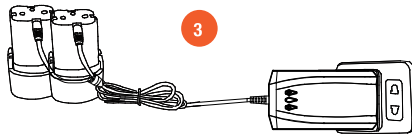
- 1** Keep pressing the trigger 3 seconds, the buzzer will ring for long, release the trigger and then the blade will not open and no longer open.
- 2** Turn off the power source and remove the battery pack.
- 3** Charge battery.
- 4** Clear up, clean and pack.
- 5** Lubricate 24h cutting head.
- 6** Sharpen the blade with ALTUNA 8130 or ALTUNA 8140.



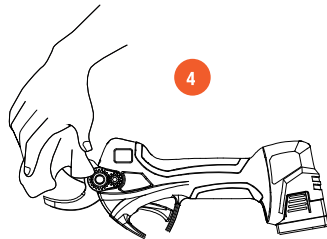
1



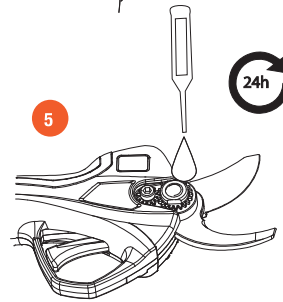
2



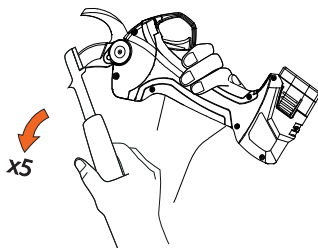
3



4

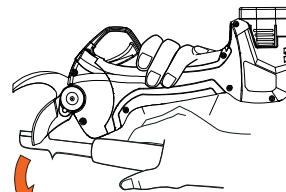


5

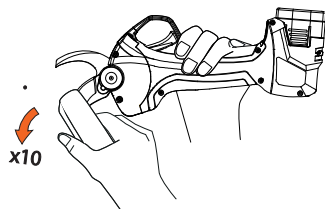


x5

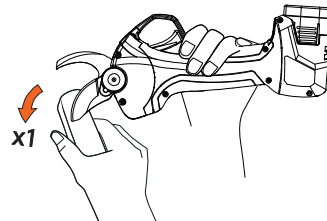
6



x1



x10



x1

FAIL INDICATIONS I

In case of any fault, please handle it according to the prompt code on the display screen.

Fault prompt on the display screen:

When using this product, if the following code appears on the screen, repair or handle according to the corresponding fault prompt.

Meanings of Shears Alarms			
Alarm Content	The Mainboard's LED Flashes for Several Times	The Mainboard's BUZ Rings ForSeveral Times	Display Fault of the LED
No Fault	0	0	E00
Anti-hand Cutting Protection	1	1	E01
Current Sensor Error	2	6	E02
MOS Tube Damage	3	6	E03
Hall Fault/Blade Breaking	4	3	E04
Peak Overcurrent/Average Current Protection	5	5	E05
Blocked Opening/Blocked Rotor	6	3	E06
Default Phase	7	4	E07
Undervoltage/Overvoltage	8	1	E08
MOS/Chip Over-temperature	9	6	E09
PWM Communication Failure/Shears Bit Voltage Error	10	2	E10
Shears Bit Type Error	10	7	E10
EEPROM Error	11	6	E11
Phase Detection Failure	12	4	E12
Programming Error	13	6	E13
> Historical Pruning Times	14	5	E14
> Maintenance Pruning Times	15	5	E15
The Number of Batteries in the Shears Bit and Battery Pack is Different	16	9	E16
The Mainboard Fails to Communicate with the Battery Pack	17	10	E17

E14: defined, unexecuted protection;

E15: defined, only unexecuted protection is reminded and the display board beeps five times per minute;

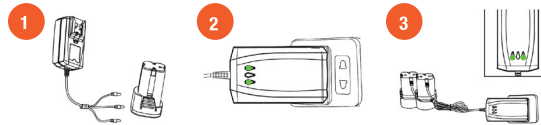
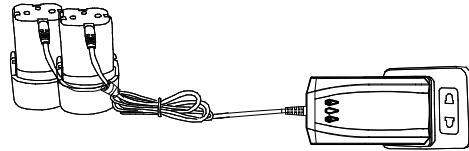
USE, MAINTENANCE AND PRECAUTIONS OF BATTERY |

BATTERY CHARGING

The battery of the new product is not fully charged. Place the battery on the desktop, insert the charger output jack into the battery socket, and then plug the charger plug into the power socket. When the indicator light lights up, charging starts. When the indicator light of the charger is red, it indicates that the charger is charging; when it is green, the charging is done and the battery can be used.

CHARGING STEPS

- 1** Place the battery on the desktop and insert the charger plug into the battery.
- 2** Plug the charger into a power outlet;
- 3** When the indicator light of the charger is red, it indicates that the charger is charging; when it is green, the charging is done. Clear up, clean and pack.



The display will be reminding you when the battery capacity is less 20%. It was stopped working automatic when the battery capacity is less 5%.

PRECAUTIONS

Each indicator light represents the charging state of one USB. This charger has three/ two USB ports. Two-port and three-port chargers are optional based on the model of the product you purchase.

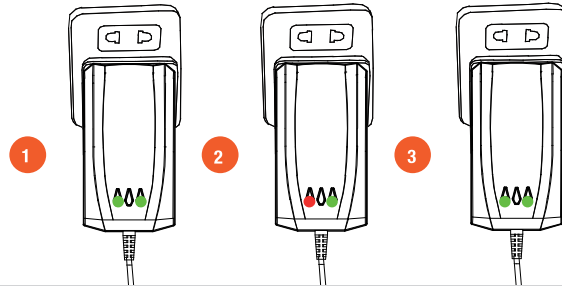


Please use the charger included for charging, on which there is an indicator light corresponding to each charging plug (whether for individual charging or multiple charging, please refer to the indicator light on the charger to determine if charging is completed. The charger adopts a sequential charging method instead of simultaneous charging.)

Note: Whether the battery is connected or the power supply is not connected, the indicator light is green.

TO CHARGE TWO BATTERIES WITH ONE CHARGER

- 1 Not charging
- 2 Charging
- 3 Fully charged



Note: In case that two or three batteries are connected, charging will start by the order from 1 to 2 then to 3, during which the indicator light is red and will turn green when the battery is fully charged. If the current battery is fully charged, the charger will jump to the next battery to be charged by the aforementioned order.

PRECAUTIONS

1. It is normal for the charger and battery to heat slightly during charging.
2. If the battery is not used for a long time, it needs to be recharged every three months to prolong its service life.
3. A new battery or a battery that has not been used for a long time will not reach its maximum capacity before about five times of charging and discharging.
4. Do not recharge after a short operation, which may reduce battery life and performance.
5. Do neither use a damaged battery pack nor disassemble the charger and the battery pack.
6. The battery will explode when it is put into fire. Do not bake the battery pack.
7. Do not charge the battery in outdoor and humid environments.
8. As the battery power decreases, the shearing capability of diameter will decrease.
9. Be sure to disconnect the electric pruning shears before charging. Do not use it while charging.
10. Do not store the battery pack in a humid environment.

MAINTENANCE AND PRECAUTIONS OF BATTERY

1. Do not charge in an environment below 0°C and above 45°C, which may damage the battery and the charger.
2. Please turn off the switch before connecting the battery. If the switch is on, accidental connection of the battery to the machine is likely to occur.
3. Charge the battery only with the charger designated by the manufacturer. The use of other chargers may lead to fire and other dangers.
4. When the battery is not in use, keep it away from small metal objects such as paper clips, coins, keys, nails and screws that will lead to short circuit, for short circuit may lead to burns or fire.
5. Do neither disassemble nor reassemble the battery.
6. Do not use batteries with short circuit.
7. Do not use the battery near any heat source.
8. Do not put the battery into fire or water.
9. Do not charge near fire or sunlight.
10. Do not insert any nail into the battery and hit or throw the battery with a hammer or foot.
11. Do not use batteries that are severely damaged or deformed.
12. Do not weld directly on the battery.
13. Reverse charging, reverse-pole connection and over-discharge of the battery is not permitted.
14. Do not connect the battery to power sockets or car cigarette lighter socket.
15. Do not use it on non-designated devices.
16. Direct contact with lithium battery is prohibited.
17. Do not place the battery in containers with high temperature and high pressure such as a microwave oven.
18. Do not use any leaky battery.
19. Keep the battery away from children's reach.
20. Do not use or place the battery under the sun (or direct sunlight), otherwise it may cause the battery to overheat and catch fire, which will result in functional failure and shortened life.
21. Do not use the battery in places with static electricity (>64V).
22. In case of any corrosion, bad smell or abnormality when the battery is first used, please do not use it and return it to the sales outlet.
23. If skin or clothes are stained with electrolyte from the battery, please rinse with clean water.
24. If the electric pruning shears are not used for a long time, the battery needs to be charged for storage.

BLADE REFUELING I

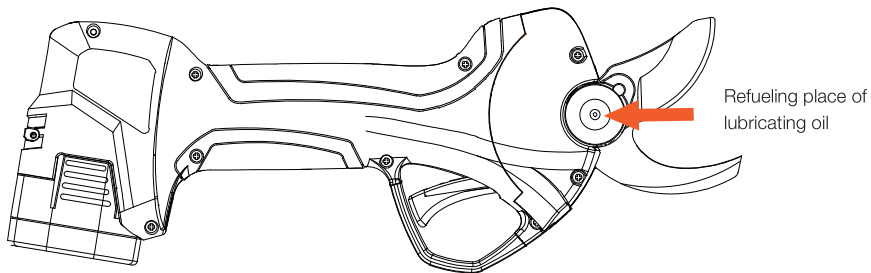


Please cut off the power source of the shears before operation.

Note: Refuel lubricating oil before using the blade or after it is used for more than 4h. For correct refueling mentioned above, the blade needs to be opened.

REFUELING STEPS

Fueling hole in the pin hole of the blade on the back of the shears. Squeeze the lubricating oil from the oil bottle into the fueling hole and cut nothing for several times to make the lubricating oil evenly distributed.



TIGHTNESS ADJUSTMENT OF THE BLADE I



Be sure to cut off the power source between the shears and the battery pack before operation.

Check the tightness of the blade before use. A blade with proper tightness will not swing left and right. Proper tightness of the blade will make it labor-saving when pruning using the shears.

Caution: When the blade is closed, the blade should not have a lateral swing. Lateral swing is an abnormal state, given it will create a gap between the two blades and causes the teeth of the gears to not properly mesh, thus damaging the mechanical structure.

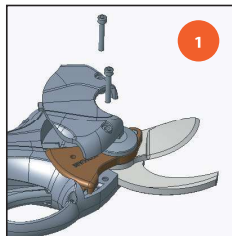
REPLACE THE BLADE |



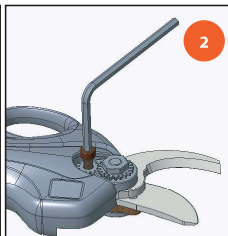
Please cut off the power source of the shears before operation.

When the entire length of the moving blade no longer coincides well with the fixed blade, or if the blade after grinding is still not clean after cleaning, it is recommended to replace the blade. The replacement steps are as follows:

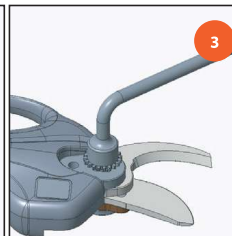
1. For safety, please power off before replacement and remove the battery.
2. Follow the steps below to replace the blade.
3. After the replacement, clean it, connect the battery, check the power and close the blade.



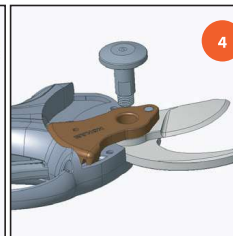
Remove the cover of the blade driving system.



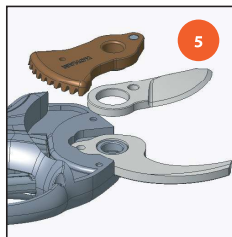
Turn the tool around and unscrew the centre bolt lock.



Unscrew the centre bolt.



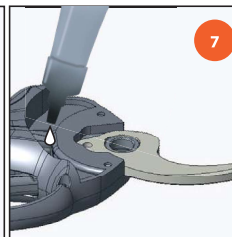
Remove the centre bolt.



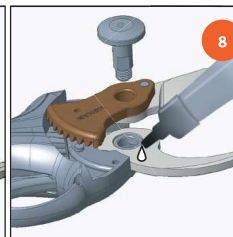
Take out and separate the driving system and the blade.



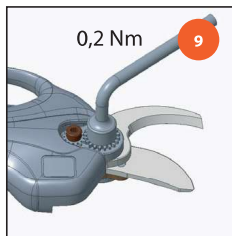
Remove the counter blade if it needs to be changed.



Clean and grease all parts including the pinion.



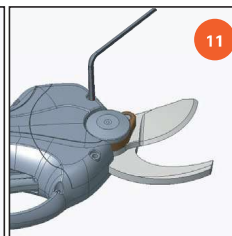
Assemble driving system and blade and fix by inserting the centre bolt.



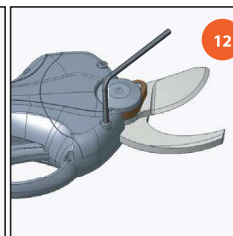
Tighten the central nut (0.2 Nm).



Tighten the centre bolt lock.



Replace the cover and tighten the upper screw.



Tighten the lower screw.

SAFETY PRECAUTIONS |

Note: Keep the cutting edge closed when the shears stop working.



Warning! Please read all instructions carefully and failure to follow all of the instructions below may result in electric shock, fire or other serious injury!

SAFETY INSTRUCTIONS FOR WORK SITES

1. Keeping the workplace clean and bright, for chaotic and dark workplaces may cause accidents.
2. Do not operate the electric pruning shears in explosive, flammable and humid environments.
3. Operate the electric pruning shears only after children and onlookers leave the operating site to avoid accidental injury during operation.

ELECTRICAL SAFETY INSTRUCTIONS

1. The battery socket of the shears must match the battery connector. Do not modify the socket and plug in any way.
2. Do not expose the shears to rain or moisture. Water or other liquids entering it may increase the risk of electric shock and damage to the device.
3. Do not misuse wires; do not use the power cord to lift, pull the shears or pull out its plug; keep the shears away from heat, oil, sharp edges or moving parts; do not use the charger when the power cord or plug is damaged. Damaged and entangled wires can increase the risk of electric shock.

PERSONAL SAFETY INSTRUCTIONS

1. Be alert, pay attention to the operation and keep awake when operating the shears. Do not operate them under fatigue, medication and alcohol reaction. Distraction during operation may cause serious personal injury.
2. Use safety guards and always wear goggles, etc. Under appropriate conditions, dust masks, non-slip safety shoes, helmets, hearing protection, etc. can reduce personal injury.
3. Remove all adjustment keys and wrenches before turning on the shears. Any wrench or key left on the rotating parts of the shears can cause personal injury.
4. When operating, do not stretch your hands too long, keep your hands away from the work area, never extend your hands under the material for any reason, ensure that any material or surface under the operating area is not damaged, and always pay attention to the balance between the feet and the body to better control the shears in case of any accident.
5. Dress properly, do not wear loose clothes or ornaments and keep your hair, clothes and sleeves away from moving parts, for loose clothes, ornaments or long hair may get caught in moving parts.

EXCEPTIONS AND TREATING METHODS

1. When non-cutting material is put into the notch accidentally, immediately release the trigger and the moving blade will automatically return to the open state.
2. When the pruning branch is too hard, the trigger should be released in time and then the moving blade will automatically return to the open state.
3. If the battery can't be charged properly, first check whether the battery charger is the one attached to the product. Then, ensure the charging voltage must be the same with that on the nameplate.
4. If any electrical or mechanical fault occurs, please turn off the switch immediately.
5. Failure to operate in compliance with the instructions may lead to liquid eruption from the battery. Please do not touch the liquid. In case of accidental contact, please rinse it immediately with water. If the liquid splashes into the eye, after rinsing with water, please go to the hospital, for the liquid ejected from the battery may cause irritation or burns.

AFTER-SALES SERVICES |

In case of any problem in use, please contact us in time (see the last page for the contact details) and our professional staff will address them for you. Replacement any damaged part with the exactly same one by our qualified maintenance staff can ensure the safety performance of the electric pruning shears.

DISCLAIMER

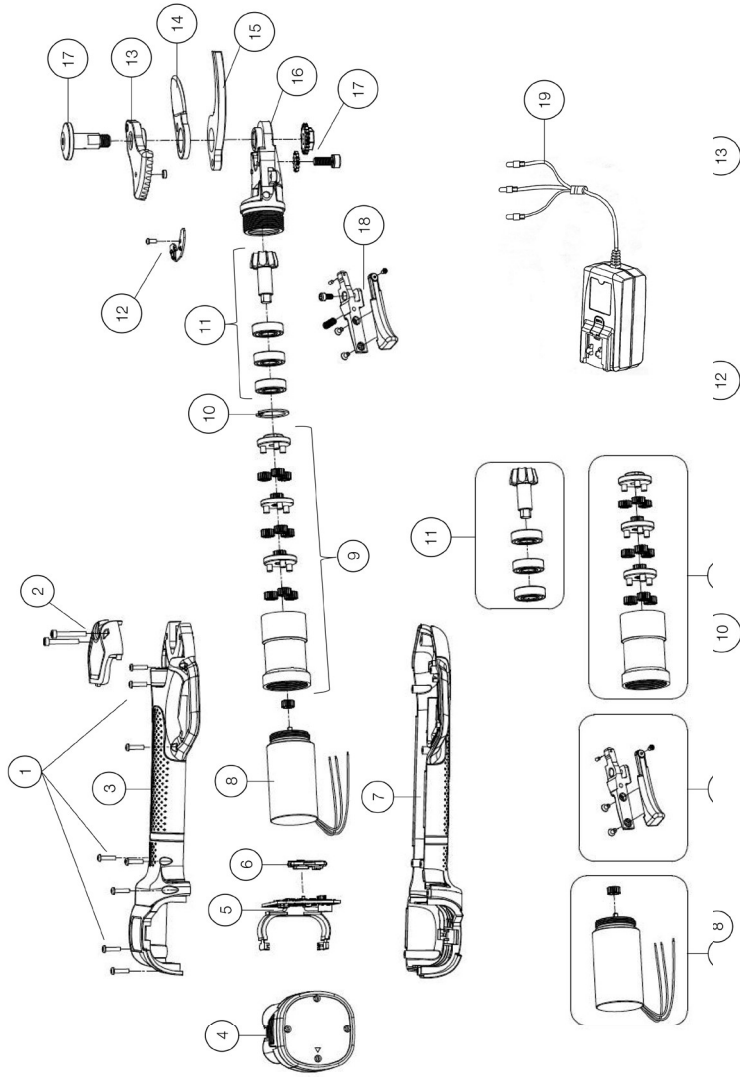
ALTUNA reserves the right to make technical improvements to the product described herein. Please understand if there is any change. If there are discrepancies between the graphic images and the texts, and the real objects herein, the latter shall apply.



Barrio Zubillaga, 58 20560
OÑATI (Gipuzkoa)
+34 943 780 851 | altuna@altuna.es
ESPAÑA / SPAIN
www.altuna.es

SPARE PARTS I

AB25



PRODUCTO		
Nº	Núm. Ref.	Descripción
1	AB25-00004	TORNILLOS CARCASA PRINCIPAL AB25
2	AB25-00003	CARCASA TRANSMISION + TORNILLOS AB25
3	AB25-00002	CARCASA DERECHA AB25
4	AB32-00040	BATERIA LITIO 16,8V 2,5AH – AB25, AB32 Y AB01-AT
5	AB25-00034	PLACA ELECTRONICA PRINCIPAL AB25
6	AB25-00035	INTERRUPTOR AB25
7	AB25-00001	CARCASA IZQUIERDA AB25
8	AB25-00015	MOTOR BRUSHLESS + PIÑON AB25
9	AB25-00011	CAJA REDUCTORA TRANSMISION MOTOR AB25
10	AB25-00010	ARANDELA PRESION TRANSMISION AB25
11	AB25-00007	TRANSMISION CORTE AB25
12	AB25-00027	PLACA PROGRESIVA + TORNILLOS AB25
13	AB25-00020	TRANSMISION + IMAN GATILLO AB25
14	AB25-00019	CUCHILLA AB25
15	AB25-00018	SUFRIDERA AB25
16	AB25-00017	TRANSMISION FINAL + APOYO SUFRIDERA Y CUCHILLA AB25
17	AB25-00022	KIT TORNILLERIA CENTRAL AB25
18	AB25-00029	KIT GATILLO AB25
19	AB32-U0041	CARGADOR DE BATERIA AB25, AB32 Y ABU1-AT (3 TOMAS)



 **ALTUNA**
professional



www.altuna.es
www.altuna-international.com